

PROCEDURE CARD

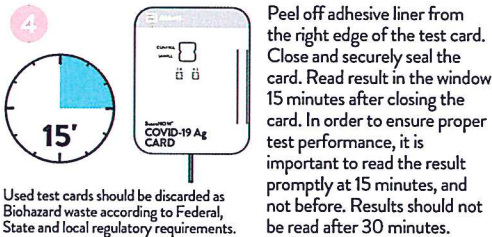
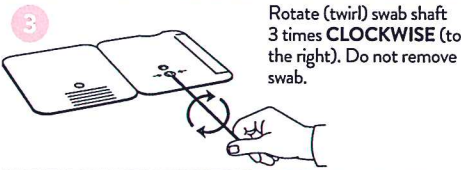
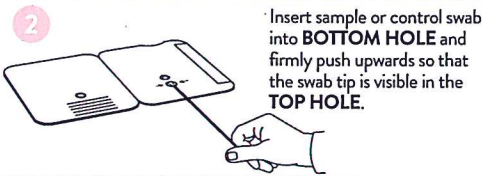
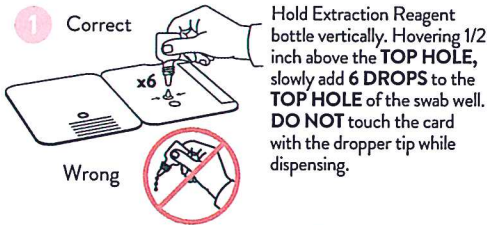
For Use Under an Emergency Use Authorization (EUA) Only.

The BinaxNOW COVID-19 Ag Card is a lateral flow immunoassay for the qualitative detection of the nucleocapsid protein antigen to SARS-CoV-2 directly from nasal swab specimens collected from individuals who are suspected of COVID-19 by their healthcare provider within seven days of the onset of symptoms.

IMPORTANT: See Product Insert, including QC section, for complete use instructions, warnings, precautions and limitations. **False negative results may occur if specimens are tested past 1 hour of collection. Specimens should be tested as quickly as possible after specimen collection.** Open the test card just prior to use, lay it flat, and perform assay as follows.

Part 1 - Sample Test Procedure

Patient Samples require 6 drops of Extraction Reagent.



In the USA, this test has not been FDA cleared or approved; this test has been authorized by FDA under an EUA for use by authorized laboratories; use by laboratories certified under the CLIA, 42 U.S.C. §263a, that meet requirements to perform moderate, high or waived complexity tests. This test is authorized for use at the Point of Care (POC), i.e., in patient care settings operating under a CLIA Certificate of Waiver, Certificate of Compliance, or Certificate of Accreditation. This test has been authorized only for the detection of proteins from SARS-CoV-2, not for any other viruses or pathogens. In the USA, - this test is only authorized for the duration of the declaration that circumstances exist justifying the authorization of emergency use of in vitro diagnostics for detection and/or diagnosis of the virus that causes COVID-19 under Section 564(b)(1) of the Federal Food, Drug and Cosmetic Act, 21 U.S.C. § 360bbb-3(b)(1), unless the authorization is terminated or revoked sooner.

Part 2 - Result Interpretation

A **negative specimen** will give a single pink/purple colored Control Line in the top half of the window, indicating a negative result. This Control Line means that the detection part of the test was done correctly, but no COVID-19 antigen was detected.

Negative results, from patients with symptom onset beyond seven days, should be treated as presumptive and confirmation with a molecular assay, if necessary, for patient management, may be performed.

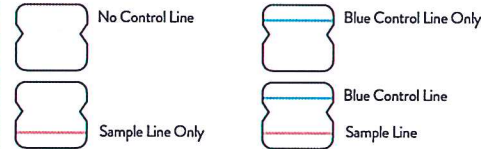


A **positive specimen** will give two pink/purple colored lines. This means that COVID-19 antigen has been detected. Specimens with low levels of antigen may give a faint Sample Line. Any visible pink/purple colored line is positive.



If no lines are seen, or if just the Sample Line is seen, the assay is invalid. Invalid tests should be repeated.

Invalid Result



Procedure for External Quality Control Testing

External Controls require 8 drops of Extraction Reagent

- Hold Extraction Reagent bottle vertically. Hovering 1/2 inch above the **TOP HOLE**, slowly add **8 DROPS** to the **TOP HOLE** of the swab well. **DO NOT** touch the card with the dropper tip while dispensing.
- Follow Steps 2 – 4 of the Test Procedure shown.

Abbott Diagnostics Scarborough, Inc.
10 Southgate Road
Scarborough, Maine 04074 USA
www.globalpointofcare.abbott



© 2020 Abbott. All rights reserved.
All trademarks referenced are trademarks of either the Abbott group of companies or their respective owners.
IN195001 Rev.1 2020/08

Abbott
BinaxNOW
COVID-19 Ag

ProCard

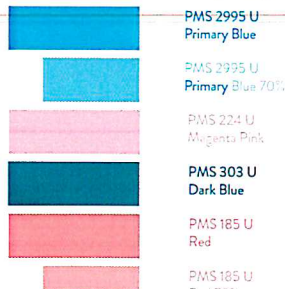
Size:
5.5" x 8.0"

Printed Colors



Incoming Inspection Colors (For Reference Only)

Colors below are not used for printing



PN: IN195001
Rev: 1

Date of Last Revision:
1.7 2020/08/25